

35th
Year

2024 - Spring Summer Fall

GAUDE TREES

since 1989



NURSERY & CHRISTMAS TREES



Volume Discounts
Page 43

TABLE OF CONTENTS

... Management's Message	Page 4
... Services Offered	Page 7
... Ideas From the Nursery Desk	Page 8
... DIY Tools of the Trade	Page 9
... Plant it Yourself - Planting & Care.....	Page 10
... Shipping Calculator	Page 16
... Cuttings - Seedlings - Trees.....	Page 22
... Hybrid Poplar Trees	Page 25
... Conifers / Evergreen Trees	Page 26
... State of the Industry - Christmas Trees	Page 30
... Christmas Tree Grades.....	Page 31
... Christmas Trees	Page 32
... Fundraiser Ideas	Page 34
... Wreaths.....	Page 35
... Christmas Tree Care.....	Page 36
... Federal Carbon Tax	Page 40
... Discounts, Terms & Conditions.....	Page 43



GAUDE TREES

since 1989

... **WORK:** 306.922.1052 info@treesrus.ca www.treesrus.ca

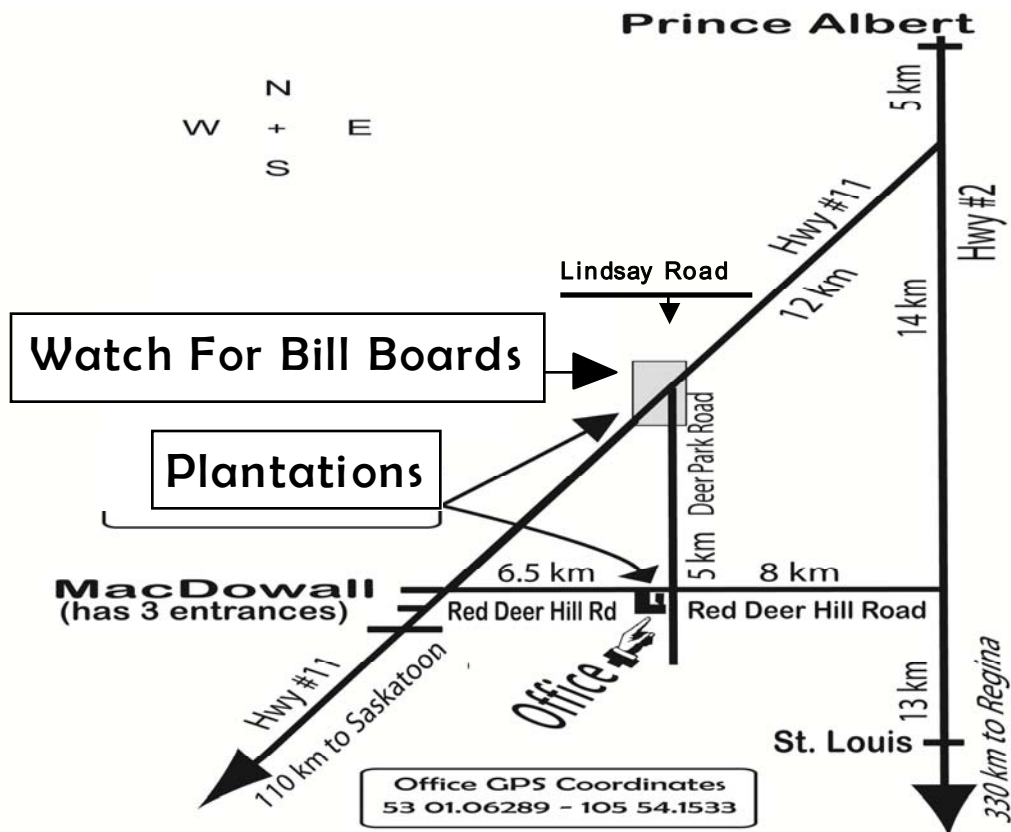
... **HOURS OF OPERATION:** Monday to Friday 9:00ish - 5:00ish
Seasonal - Saturday & Sunday Hours - *Call First*

... **SHIPPING/RECEIVING YARD:** By Appointment Only - loading typically takes place in the plantations, we'll direct you to your loading spot; watch for the highway billboards as a reference point.

... **FROM PRINCE ALBERT:** At the Canadian Tire lights on Second Ave W. Travel South on Hwy #2 -5 km. Turn West onto Hwy #11 - 12 km. Turn South 5 km on Deer Park Road

... **FROM SASKATOON:** Go North on Hwy #11 - 112 km. Turn South 5 km on Deer Park Road, watch for billboards on Hwy

... **BILLING ADDRESS:** RR 3 Site 3 Comp 5 Prince Albert, SK Canada S6V 5R1



PICK UPS: Show up with a clean truck & trailer free of grime & straw. Check your tire pressures prior to arrival. Bring numerous straps/bungee cords/tape measure and a sheet/quilt/tarp to prevent live product from drying out. For big trees ensure you bring your own method to support the trees while trees lay on decks with a factory bunk, four straw bales, 2"x4" structure, freight pallet on end, etc. otherwise risk the tree from breaking loose of the root-ball.

MANAGEMENT'S MESSAGE

Dear Customer,

This small business began as a commercial honey business dating from 1983 and culminated into producing 1/3 of a million lbs of honey annually. In year one, a semi of forty five gallon drums filled with 650 pounds of honey left the loading dock. The bee business had a lot of live colonies which at the height of the season would have a population of 66 million pollinators. In 1989 we diversified into trees and repeatedly planted in excess of 20,000 seedlings. In 2000 we narrowed our focus and have since only grown, dug and cut trees. It was decided right from the beginning that we would leave a forest behind and not clear all the plantation blocks. Today the land-mass is teeming with wildlife where we are now the visitors prompting us to carry whistles and spray just in case we startle... One of our two billboards along Hwy #11 between Saskatoon & Prince Albert will be re-branded with "REWILD- BRING NATURE BACK" to encourage society to begin that exact process. We all have the capacity to make a difference!

We have some firsts behind us:

- ... First to introduce thousands of Balsam Fir and Meyers Spruce as a nursery product
- ... Several 1st Place finishes in Christmas tree competitions
- ... Provider of Legislature trees in more than one jurisdiction

By appointment, nursery products are available for pickup or delivery direct from our plantations starting the last week of April until early October. November is when we ship Christmas trees and all the festive joy they impart. Our products have been annually shipped from the Winnipeg area all the way to Whitehorse and Yellowknife in those tractor trailers you see on the open road. Today, due to decreasing inventory volumes, ramifications of Covid, challenges attracting new labour and that my team is generally very experienced yet semi-retired our output is focused on quality however the output has been reduced.

It's only timely to inform you that we've had to love what has been undertaken over several decades with many hundred day shifts inclusive of 330 hour months. Literally breathing it all in. Significant reasons were our passion of living the moment with nature, pursuit of excellence and our commitments to you.

Larger Christmas tree lots we've supplied have product averaging 12 years of age; do the math and discover lots with a thousand trees provided more than 14 thousand years of carbon sequestration while providing natural habitats.

It took a 1,000 people over the years and with those many pairs of hands, we made the world a better place. On the inside of our Prince Albert Christmas tree retail lot sign is a hand painted ribbon border with the following "Special Thanks to all past & present staff who've given of themselves". Very soon we'll pull back and slide towards the next phase of our lives and as the expression goes, we'll be gone fishing.

Looking through our catalogue may prompt questions about our products, please call us for further information. We hope to make your experience in dealing with us memorable. Enjoy your life's adventures...

Cheers from us who put out for you:

Ray & Kelly Gaudet, Anne Bitschy
P.S. Lets go green!!!







NURSERY STOCK

PLANT ANYTIME UNTIL FREEZE UP



SEASONAL ENERGY SAVINGS *Trees are valuable; they increase property values and reduce energy costs.*

DECIDUOUS *trees shading a home on the south & west sides can reduce attic temperatures by 40 degrees during the summer months.*

CONIFERS *will provide shelter for your home and yard from the prevailing winds when planted in the northwest corner of your property.*



SERVICES OFFERED - NURSERY

DELIVERY BY GOOSENECK TRAILERS (30 foot decks)

... These are our staffed deliveries with rates calculated for both directions of travel & vary according to fuel prices.

DELIVERY BY TRACTOR TRAILERS (53 foot decks)

... Frequently shipped and are able to provide you with a quote based on distance covered from our shipping yard (map on page 3). Your order may be included with others destined in your general direction.

... When we arrange and prepay the shipping of your products - an administration fee is applied to cover time, phone calls, bookkeeping/cheque & mailing costs.

PICK UP OPTIONS:

... **CALL MINIMUM OF 24+ HOURS AHEAD AND PRIOR TO ARRIVAL** to ensure that our staff is available to assist you in the loading process. FYI, office compound is typically closed due to all endeavored within the plantations.

INSTALLATION SERVICES:

... It's possible we could install our trees within a reasonable distance from Prince Albert, otherwise we'll hook you up with someone reputable.

IDEAS FROM THE NURSERY DESK

The following snippets are why it's a great to plant trees and shrubs.

Trees enhance and beautify almost any environment such as golf courses, parks, boulevards, cityscapes, residential landscapes and general development.

Trees provide shade from the sun, shelter from the winter winds thus reducing cooling & heating bills. Create additional environments and attract wildlife. These endeavors result in increased property values.

Planting non-typical or unusual species adds biodiversity to your immediate environment. The establishment of diverse



species promotes the added benefits of buffering against the onslaught of significant pestilence issues which may threaten the mono-cultural species of your area. Native stand collections are the most genetically diverse. When planning your space with broader diversity, the benefits of further checks and balances provide additional natural buffers to assist in protecting what already exists in your local environment. One ought to consider this one aspect of biodiversity not only from an aesthetic perspective but also as an environmental safety check-valve versus the use of pesticides.

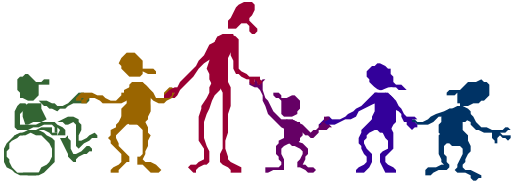
Lure your residents away from flat-screens with inviting places to get physical. Get the children of your communities



IDEAS FROM THE NRSERY DESK

The following snippets are why it's a great to plant trees and shrubs.

Trees enhance and beautify almost any environment such as golf courses, parks, boulevards, cityscapes, residential landscapes and general development.



Trees provide shade from the sun, shelter from the winter winds thus reducing cooling & heating bills. Create additional environments and attract wildlife. These endeavors result in increased property values.

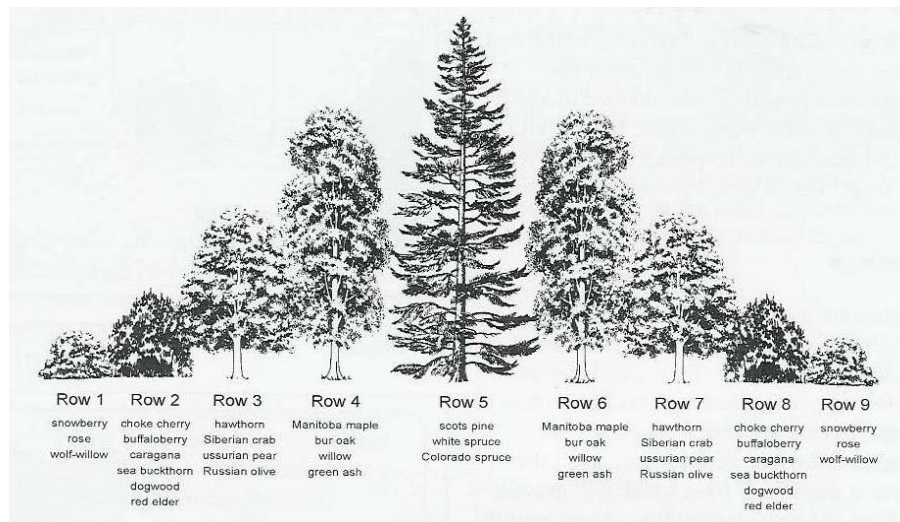
Planting non-typical or unusual species adds biodiversity to your immediate environment. The establishment of diverse species promotes the added benefits of buffering against the onslaught of significant pestilence issues which may threaten the mono-cultural species of your area. Native stand collections are the most genetically diverse. When planning your space with broader diversity, the benefits of further checks and balances provide additional natural buffers to assist in protecting what already exists in your local environment. One ought to consider this one aspect of biodiversity not only from an aesthetic perspective but also as an environmental safety check-valve versus the use of pesticides.



Lure your residents away from flat-screens with inviting places to get physical. Get the children of your communities involved and start planting, entice them to get onboard and make it fun. They will feel a deep attachment to this place for the rest of their life, leave a tribute for the earth. Establish walkways, jogging paths and adventuresome biking trails. Getting under the natural protection of large shade trees enable you to ditch the umbrellas and sunscreen. Trees also can provide shelter from the cool evening breeze.

Provide great spaces so neighbors have an opportunity to meet.

Make it larger than life, have the local business community



DIY - TOOLS OF THE TRADE

MARKING & TRACKING ITEMS

... Plan & visualize your planting site by using string to make straight lines between two points, for groupings poke wire stake flags to identify placement (colour coordinate your flags by associating pink for Pines or Poplars, blue for Balsam Fir, white for White Spruce, etc.), mark the planting spots to dig using spray/marketing paint. Measuring wheels facilitate much effort.

... Flagging tape is useful in identifying caution or safety concerns & landmarks. Use it to correctively prune trees & tie up new leaders/tips/tops.



PLANTING TOOLS, STAKES, STRAPS

... Rapid growth on some trees benefit from caning with Bamboo to maintain straight trucks. Taller stakes must be used to keep trees from leaning over until roots are re-established into their new surroundings (2 to 3 years).

Use two inch diameter untreated wooden fence posts or metal T-bar pounded into the ground then secure 18 gauge wire or rope to the stake and wrap around the truck to minimize movement of the tree (allow for a bit of movement and remember the truck diameter grows annually).

... Protect the bark by feeding wire or rope through soft and supple air line, water or fire hose, also soft straps to prevent truck injury.

... Pruning shears are the proper tool to trim and maintain branches on trees.

MOISTURE & IRRIGATION

... A **Moisture Meter is a low cost probe** which will assist in determining soil moisture. Insert into the soil near the root ball and add water if the Moisture Meter indicates such.

... Deciduous trees display lack of moisture with leaves wilting. Coniferous trees might not show signs of lack of moisture for up to two weeks, unfortunately by then the damage to the ends of the needles (which turn red) is not reversible.

... It is important to keep the moisture content up during the growing season as well as insuring your plants go into the dormant stage in the fall well watered. Insure spring arrives with the surrounding ground around your plantings being amply moist for a great start and another prolific growing season.

... We suggest keeping one in your vehicle to check your shelter-belt plantings and all other remote sites, just so you can monitor without ever wondering.

... Moisture Meters are your guarantee to determine water requirements of plants reducing risk of trees perishing. Keep newly planted trees consistently moist for the next five years...

... **PROBE TO PROTECT YOUR INVESTMENT!**




PLANT IT YOURSELF

PLANTING & CARE

It's important to maintain tree health and vigour by following a few simple steps to enjoy a healthy tree for many years to come. To succeed - proceed...

- ... Considering their age and future years ahead of them, the act of planting is very brief; however this is your most critical step! Survival is dependent on root growth capacity and these must be kept moist! Next, commit yourself to giving each tree the five years it takes to fully establish for a healthy future. Following these tips insures rapid establishment of your trees.

PREPARATION

- ... "Call Before You Dig". As part of the planting process, it's crucial that your underground lines are located. This free service is provided by the utilities such as telephone, gas, etc. & must be called as a cautionary measure. Their contact numbers are found in the government Blue Pages.  For Saskatchewan the number is 1-866-828-4888. In most cases two working days are required to have your property marked out.

PLANTING TIPS FOR CUTTINGS

- ... When you receive cuttings they may be stored in a cool dark place or sealed in a fridge.
- ... Prior to planting these must be rehydrated by soaking in water for a minimum of three days and a maximum of six days. Roots emerge on day seven or eight. Ensure cuttings remain banded together and point upwards in the vessel which these are immersed in. Keep these upright and replace the water daily. The level of water should be half to two thirds up the stem.
- ... When planting, you must have two buds above the soil line with dirt firmly packed below.
- ... After planting, you **MUST** water them in the same day or within 24 hours and continue to ensure the soil remains moist until freeze up (use a moisture meter).
- ... Success of cuttings is depends on care; moisture, warmth of the summer sun and clearing away unwanted competitive vegetation.
- ... Applying mulch adds an elevated degree of moist



soil conditions to allow the cutting to both break open the buds and grow vertically but more importantly to grow roots and penetrate the soil.

TRANSPORTING TREES

- ... Support upper portion of all tall nursery stock while laying down (see pictures) to ensure the tree does not breakout from the rootball and cover load with a consideration of the wind factor. Use of an air tarp or anything else which can/should be quickly removed at the destination to prevent wind burn and over-heating. Unload and move wire basket trees with a skid steer, compact track loader, excavator or tractor by: 1) lifting with a chain hookup using four hooks (two on each side at 2:00, 5:00, 7:00, 10:00) and only by the wire cage. 2) lift with forks straddling the lower portion of the rootball. 3) lift by sliding a bucket underneath. What ever method used ensure the equipment lift capacity is a minimum of 1,600+ lbs. Never allow a wire basket tree to be dropped or handled by the trunk. Mist with water to rehydrate after transport.

PLANTING ISSUES TO AVOID

- ... Preventing access to utility transformers
- ... Planting too close to utility lines, buildings, homes or one another

PLANTING TIPS FOR FIELD GROWN WIRE BASKET TREES

- ... Be cautious and thoughtful when handling with to avoid personal injury. We move wire basket trees several ways; typically with either a loading arm with suspended chains and grab hooks latching to the top of the wire basket (the basket strains and may deform slightly under the heavy weight), or with hydraulic forks which squeeze the root ball. Buckets will work to lift the trees but extreme caution is required (secure within the bucket with a chain and consider additional personal protection in the event the tree topples over and potentially strikes the equipment operator or ground personal). Pending the size of the basket, your average big tree from us dug in a 44 inch basket weighs 1,600 pounds. It's the root ball which weighs the most therefore be careful when handling and nudging one way or another. *Do not handle by the tree trunk, this is a potential breaking point!*
- ... Loaders can dig holes using power augers, V buckets or with an excavator. You may dig by hand



- with sharpened shovels but note that you will never have worked this hard ever before.
- ... Save yourself considerable effort and coordinate the digging of holes to coincide with the arrival of trees at your planting site: Be smart and unload trees either into each hole or beside the spot about to be dug. If you unload into a holding area instead, you'll want mechanization to facilitate the re-handling later. Try to group these together upright by nudging against one another.
 - ... Measure the height and width of the wire basket itself and dig the hole to this depth but a bit wider. Resources permitting, the soil that is removed from the hole could be improved by mixing in a good rich amendment. Using quality top soil and perhaps a bit of organic matter such as peat moss will help most trees penetrate their new surrounding with roots easier for a good start at anchoring themselves in and having access to new moisture and nutrient sources.
 - ... Place the soil you are removing from the hole in a wheelbarrow or on a tarp for reuse there or elsewhere.
 - ... The tree must sit on firm soil. With everything still intact including the burlap and wire cage, carefully manoeuvre the tree into the planting hole and check that the depth is identical to the root ball. Plant the top outer edge of the root ball flush at the exact same depth it came out of the nursery, no deeper or shallower. When you set the tree in the hole and if it sits too high above the ground, lift it back up and away from the individual who'll jump in and take out some soil. Be safe here!
 - ... When you have the tree in the hole, get it as upright as possible. To assist in the process, you can tug on one side of the wire basket with a chain or prop it over by simply using a wooden post to nudge. Hold it in place by adding a few scoops of soil to the inside edge of the hole and tamp it firmly with the handle of the shovel. This is easy and will assist with securing the tree now firmly in place. Continue to add more soil and tamp it in firmly each four inches of elevation. Back fill soil to transition from the surrounding soil to the rootball.



- ... The main roots of trees travel horizontally one inch under the surface. **DO NOT COVER THE TOP OF THE ROOT BALL** with additional soil otherwise suffocation may occur.

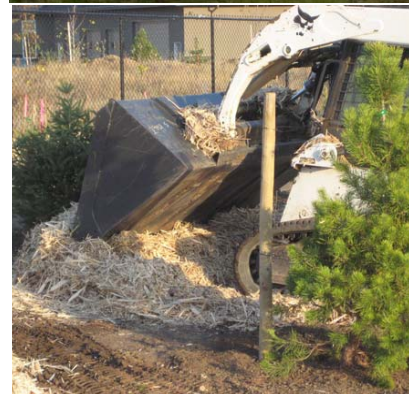
STAKING TREES:

- ... Trees over 10+ feet/3+ meters in height should be staked for two to three years to prevent the wind from blowing them crooked.
- ... Stake with three narrow non-treated fence posts, 2" x 2" or T-bar to stabilize the tree and root ball after planting. Stake 1/4 to 1/3rd up the trunk of the tree and leave a bit of slack for the future increase in trunk diameter growth.
- ... The industry employs 12 gauge wire or polypropylene rope for fastening the tree to the stake. Protect the tree trunk by feeding the portion of wire or rope through a 10-inch long length of air, fire or water hose or any other type of soft flexible strapping material may be used to loop around the tender growing bark.
- ... Wire basket trees are held together and kept snug with by lacing a rope of sorts through the upper wire loops of the basket to contain the soil and roots together. Once the tree is staked in the hole remove all the lacing securing the top of the wire basket together, then remove/cut off the burlap from just the topmost portion of the root ball. Some customers remove the top ring on the wire basket with bolt cutters under certain conditions (typically aesthetic).



CREATE A BERM & MOAT:

- ... Use the excess displaced soil from when the hole was dug to build a raised berm to create a moat similar to that which surrounds a castle. Build it just beyond the rootball. Think of a donut preventing water run-off. This moat will help maximize the amount of water that gets down to the root zone, you'll appreciate that extra effort often.
- ... If the visual berm doesn't appeal to you then spread the extracted soil in low site areas.



WATER:

- ... After planting, your next morning start with a good water soaking of 20-50 gallons/90-200 litres. The newly disturbed soil will be the last good opportunity to double check to make sure your tree is still straight. This initial soaking will turn the soil to porridge for three to five hours until it settles



while eliminating air pockets guaranteeing to fuse the soil particles together to the burlap and the tree's rootball allowing future root development/penetration to commence. To prevent a leaner for occurring during this initial watering, keep an eye on it and push it the other way until the soil settles out the excess water. It's a great time to add more soil around the edges if settling occurs.

... Depending on sunshine, wind desiccation and soil types, you will be required to ensure your trees thrive in consistent soil moisture. On the other hand you don't want to drown your trees either - depend on a moisture meter. Watering is crucial: dry soil is a killer for all new trees.

... A **Moisture Meter is a low cost probe** and will assist in determining soil moisture. Insert into the soil both near and into the root ball and add water if the Moisture Meter indicates such. Flower and leaf trees show lack of moisture by observing the foliage wilting whereas coniferous trees indicate nothing until drought has inflicted damage. The tell tale sign of this is the needle tips begin to turn red/brown and unfortunately by then the damage is not reversible however immediate watering will bring relief and mitigate further needle damage. Over

watering will drown the trees and cause other needle damage typically on the oldest ones closest to the truck. It is important to keep the moisture content up during the growing season as well as insuring your plants go into the dormant stage in the fall well watered so that when they begin to come alive in spring they have a great start and another prolific growing season. These Moisture Meters are a very inexpensive way to determine the water requirements of plants and will reduce the risk of your trees perishing. **GET ONE!!!**

... In October until freeze up, water five feet beyond the trunk of tree to minimize winter desiccation. Keep tree consistently moist for five years.

MULCH:

... Mulches are a real benefit assisting in preserving soil moisture, minimize weeds which hamper growth and survival by thieving moisture and nutrients. This can be comprised of grass clippings, leaf material, straw, plastic, tire



crumb, old carpet flipped upside down, wet newsprint and other stuff.

- ... If wood chips are used, apply no deeper than 4 inches/10 cm deep and keep off the trunk of the tree.

FERTILITY:

- ... You may apply fertilizer however it should be placed beyond the rootball. To be technical, a light application on the 1st of June, July and August is ideal otherwise only in June. Granular fertilizer is great but stay away from feed and weed types. You can also use water soluble fertilizer (follow manufacturer recommendations). Refrain from over fertilization or run the risk of severely burning the root system, damaging the tree.

ANTI-DESICCANTS:

- ... Apply to foliage of trees, especially those exposed on harsh windy sites prior to freeze-up. It's a good idea to apply this product in the late fall to minimize the risk of winter burn in March causing the needles and foliage to turn brown, which indicates drought stress, as the sun is intense and reflects off the snow causing the plant to heat up and dry out.

PESTILENCE:

- ... Be vigilant of localized colour changes in your foliage. Take a picture then search for pests of the species in question on "Google Images".

REALITY:

- ... Satisfaction is directly related to personal care and attention. It's your investment and the desire to succeed is the objective. Allocate the future time to dedicate the care. Be patient, it's worth it!!!



FUTURE INDUSTRIES

Our forests have multiple facets, such as providing saleable carbon in the form of carbon credits, or biomass production as a source of fuel for power plants and/or fiber production in general for paper or lumber, etc. This little known fact is spurring-on an influx of planting activity. It all takes a lot of time and the sooner it begins, the better ...



SHIPPING CALCULATOR

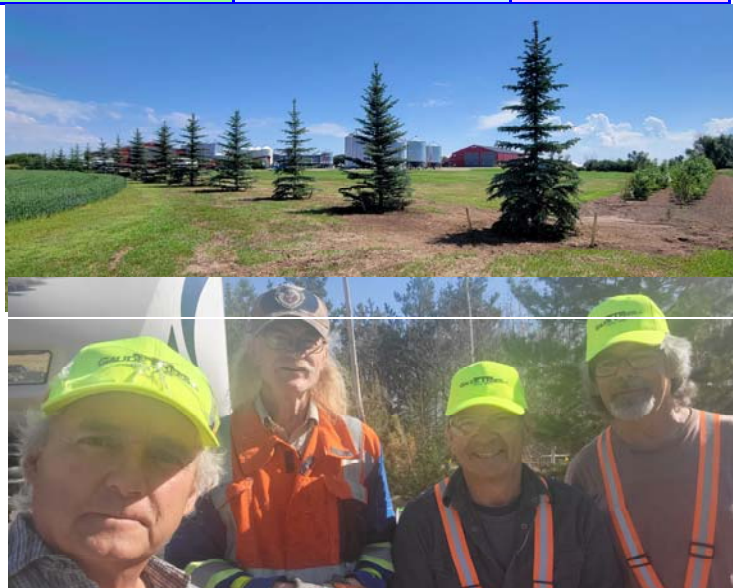
CONIFERS (cone bearing trees) - Measured by height and sized from ground to top of tree (leader tip). Add this length to the root ball height of wire basket.

FOLLOW THIS EXAMPLE TO DETERMINE:

- ... **BE A GOOD ENGINEER** - measure the dimensions of vehicle's Cargo Area twice (*truck & trailer, etc.*) and load correctly once.
- ... **WEIGHT CAPACITIES - G.V.W.** [*gross vehicle weight*] ensure you do not exceed your vehicle combination capacity at specified maximum tire pressures
- ... **VEHICLE** - label/tag usually adhered in the drivers door area and your owners manual
- ... **TRAILER** - label/tag usually adhered near the hitch along frame and your owners manual
- ... **TIRES** - Check tires pressures are at capacity prior to tree pickup

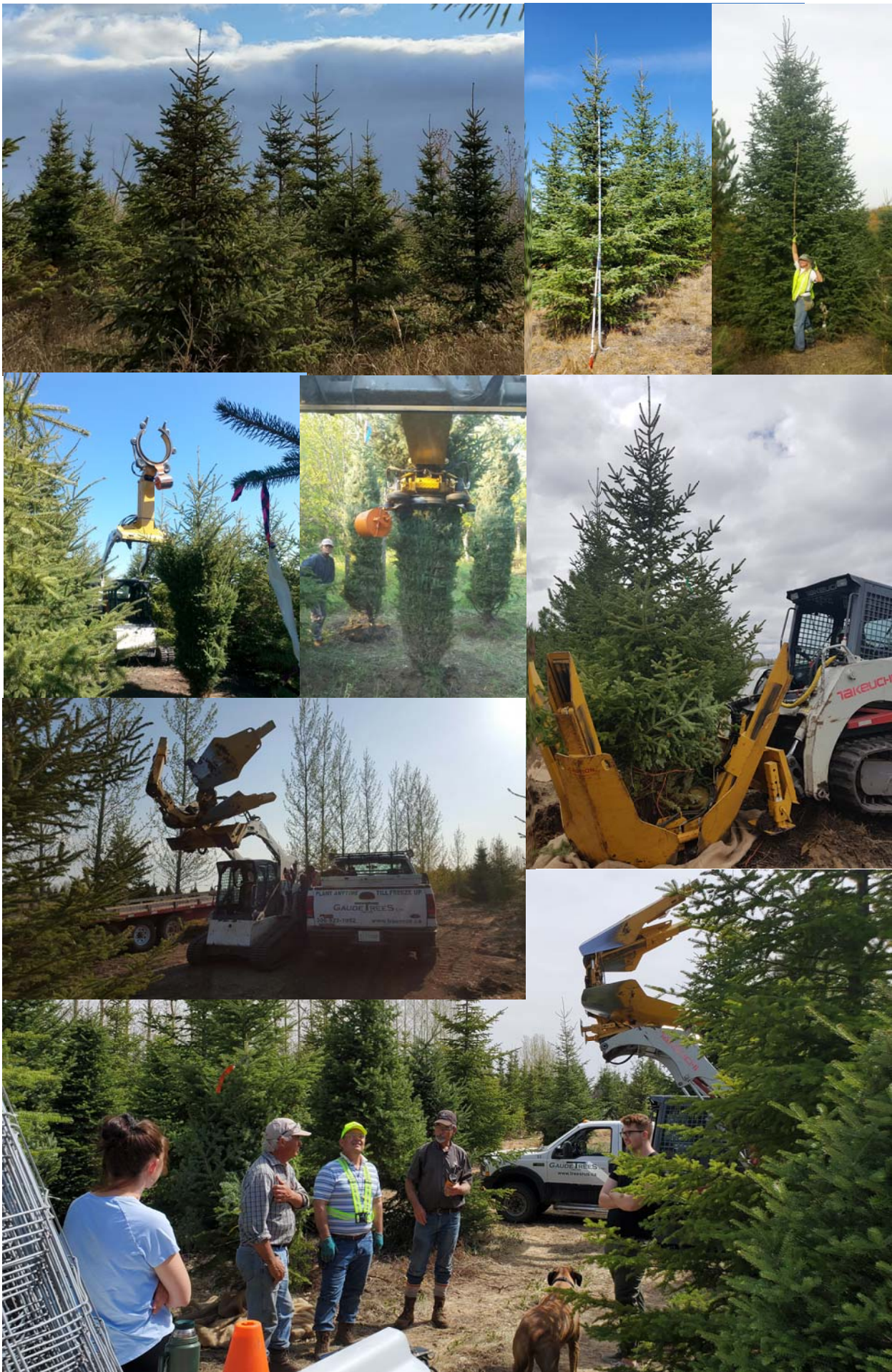
Tree Height ft - m	Wire Basket Size	Diameter x Height	Volume cu ft - litres	Weight lb - kg
6 ft 1.8 m	28"	28 x 18 in 71 x 45 cm	3.4 cu ft 100 l	360 lb 165 kg
8 ft 2.4 m	32"	32 x 20 in 82 x 51 cm	5.1 cu ft 150 l	550 lb 250 kg
10 ft 3 m	36"	36 x 24 in 90 x 60 cm	9.7 cu ft 275 l	1,100 lb 500 kg
12+ ft 3.6+ m	44"	44 x 26 in 112 x 66 cm	15 cu ft 425 l	1,600 lb 725 kg

- ... **REAR TREE SUPPORT** - Ensure you bring your own method to support the trees while they lay on decks with factory bunks, four straw bales, 2" x 4" structure, freight pallet, etc. otherwise risk the back trees breaking loose from the rootball!





WILDLIFE PLANTING: All which is planted will attract wildlife. We have insects pollinating flowers, bears eating our fruit, owls in the trees, beavers in the creeks, game animals in the plantations, squirrels scurrying around, mink looming about. What is there not to like! You could write chapters on discoveries to share with all!









CUTTINGS - SEEDLINGS - TREES

- ... Evergreens, the cornerstones of landscape design, provide colour all year long. Ranging from small to tall, narrow to broad, they are featured in rock gardens, bordering structures, standing alone or in groupings. Plant as a single specimen privacy screen, grace property edges and lanes or many as windbreaks. Their elegance may exceed a century of time.
- ... Conifers are dug in spring until bud break, digging resumes later August until early October. Plant anytime (all season long) until freeze up.



CARBON SINKS: *Trees sequester carbon from the atmosphere. The more trees planted the greater benefit to the planet offsetting our carbon footprint.*

CUTTINGS & SEEDLINGS

Sometimes available up until the May Long weekend

Shipping/Pick-up begins later April

The majority of all trees main roots grow horizontally 1 inch/2.5 cm under the surface and extend in early spring until freeze up. The next spring roots continue to expand outward to be able to withstand the forces of nature including wind so as to not blow over and access more moisture/nutrients. Seedling are delicate and require being planted at the soil line **NOT DEEPER**. Container grown plugs must have 1/2 inch/ 2 cm of soil above these so the sun does not bake the moss core dry and with regards to bare-root, plant at the identifiable soil line. Tools of choice for plugs are industry available narrow planting shovels 3 inches/7.5 cm wide at the top or with a Pottiputki planting tube. We use both and typically prefer the Pottiputki. When planting bare-root use a shovel 5+ inches wide or use a two handled clam style post hole digger and spread the roots horizontally. We use both types of tools. Note that when using shovels, you may want to assist opening the hole by prying the base of the shovel against safety toe boots and use your foot to help nudge open a cavity. When the seedling is now in the ground, pound the soil firmly with the heel of your boots, kicking into the soil near it to keep it upright now and again in the near future as needed. Avoid scuffing the bark/skin/cambium while eliminate all air gaps. Decades ago a couple of foresters who said that when seedlings are exposed to the air, especially wind and sun; it's like taking a fish out of the water so get the thing planted asap! For the ultimate success, the same day the tree has been planted, water them in slowly to create mud 8+ inches deep. This method ensures the soils sucks itself right around the plug or roots to ensure the seedling has immediate access to moisture and nutrients.

PLANTING TOOL - POTTIPUTKI used for manual planting of containerized seedlings. The planters can work in an ergonomically correct position while maintaining high productivity, making the task both fast and comfortable. Look it up on YouTube to learn more.

Pottiputki Planting Tube

Used in functioning condition

\$70.00 each



PINE RED (*Pinus Resinosa*) Zone 2 Height 80+ ft/25+ m Spread 25 ft/8 m Needle Length 5 in/12 cm The reddish/orange bark is where the name is derived from. These prefer acidic, sandy, well-drained soils. Imagine the shape of a lollipop, with the striking feature of those long needles which leave a soft carpet which cover the ground underneath. Red Pine has an additional end use as a valuable saw log.

Red Pine - Plug Seedling - 2 yr old	4 - 8 in - minimum Order 10	\$6.00/tree
-------------------------------------	-----------------------------	-------------

Red Pine - Bare-Root Seedling - 4 yr old	8+ in - minimum Order 10	\$8.00/tree
--	--------------------------	-------------



SPRUCE WHITE (*Picea glauca*) Zone 1 Height 100+ ft/30+ m Spread 21 ft/7 m Needle Length 3/4 in/20 mm. Longest living tree in our region at more than 100 years. This is the hardiest tree for shelterbelts and is seen in most all forests throughout the prairie region. heir trucks get up to 1 m/1 yd in diameter when mature. Needles are four-sided, sharp, and stiff, and are arranged spirally on the twigs; whitish-green. White Spruce has an additional end use as a valuable saw log..

White Spruce - Plug Seedling - 2 yr old	8 - 12 in - minimum Order 10	\$6.00/tree
---	------------------------------	-------------

White Spruce - Bare-Root Seedling - 4 yr old	18+ in - minimum Order 10	\$9.75/tree
--	---------------------------	-------------



PUT THE JETS ON - PLANT POPLAR



Plant if you want shade and shelter in a hurry. Burn some fire safe heating fuel which will not generate sparks & harvest the branches for kindling! Poplar is very adaptable tolerating drought, urban pollution including salt & variable soil ph. Plant Poplar on contaminated sites for significant phytoremediation to filter and convert heavy metals from soils. Surround lagoons & septic fields for waste and gray water treatment. Suitable as a screen, shelter-belt, windbreak or shade tree in parks and commercial areas ok with a lot of leaves.

Poplar Okanese (WP-69) (*Populus x 'Okanese'*) – Zone 2 Height 60 ft/18 m Spread 25 ft/8 m **Gender Male (no fluff)**. Developed in 2007 & considered the hardiest hybrid with an expected long life. Branch angle of 45 degrees, large leaves. Named in honour of Saskatchewan First Nation Chief Okanis of the Okanese band (1875-85) Plant at 15 ft spacing, zig-zag two of more rows. Expect 2 to 8 ft from our cuttings in year 1, after establishment these grow 5 to 7 ft/year. Better yet, plant rooted cuttings for a significant head start. Read the “PLANT IT YOUR-SELF” (written earlier) for establishment instructions.

Okanese Poplar (spring only)

Cuttings 8-10 inch / 20-25 cm length 100 / bundle \$130.00 / bundle

Rooted Cuttings 12-20 inch / 30-50 cm height minimum Order 25 3.00/tree



FIR Balsam (*Abies balsamea*) – Zone 1b Height 75 ft/23 m Spread 16 ft/5 m. ***This NATIVE SPECIES IS THE MOST VERSATILE TREE WE GROW WITH A REMARKABLE ADAPTABILITY.*** *Foliage is soft and blunt tipped with deep green upper and bluish undersides. The trees' narrow pyramidal form resembles the lances used in medieval jousting. The trunk has a smooth surface of silver-greyish-mauve bark with many unusual round resinous blisters of liquid pitch (often the size of marbles).*

*Plant Balsam Fir ANYWHERE except in water logged areas. Its adaptability is attributable to being a **twilight species**, meaning as a forest matures and is prepared for regeneration whether by natural burns or other significant natural processes, Balsam Fir naturally begins to establish itself under a closed canopy with little sun shining through. Plant them to rejuvenate urban forest bluffs or in crowded competitive places where vegetative pressure encroaches or in any shady area as well in full sunlight on golf course fairways and sandy beaches. Where ever they are planted, ensure they establish with sufficient moisture around their roots. After establishment they are very tolerant of drought and from a bio-diversity perspective and a potential to reach 150-200 years of age, **COULD BE NATURALIZED** in all urban and rural settings requiring year round greenery. Ideal alternative to all other conifers especially where Colorado Spruce is quite abundant.*

It's the distinctively pleasant and aromatic fragrance of natural cut Christmas trees. The traditional uses of balsam fir were for its antiseptic and stimulatory effects used in external applications to combat injuries or treat chest infections, urinary, cystitis applied as a herbal plaster and as a deodorant. This resin in the bark blisters was also the source of a confection prior to the advent of chewing gum and a resinous fuel used in torches. Not so long ago when we all had time on our hands and before the pharmaceutical industry came along... this knowledge is becoming obscured in history.

Unfortunately, Balsam Fir is rare in the horticultural trade and should be offered by all!





5 ft / 1.5 m height	32 in. Wire Basket - 550 lb/250 kg	\$190.00 each
6 & 7 ft / 1.8 & 2.1 m height	32 in. Wire Basket - 550 lb/250 kg	\$220.00 each
8 & 9 ft / 2.4 & 2.7 m height	32 in. Wire Basket - 550 lb/250 kg	\$250.00 each
10 & 11 ft / 3 & 3.3 m height	36 in. Wire Basket - 1,100 lb/500 kg	\$280.00 each
12 & 13 ft / 3.6 & 3.9 m height	44 in. Wire Basket - 1,600 lb/725 kg	\$315.00 each
14 & 15 ft / 4.2 & 4.5 m height	44 in. Wire Basket - 1,600 lb/725 kg	\$350.00 each
16 & 17 ft / 4.8 & 5.1 m height	44 in. Wire Basket - 1,600 lb/725 kg	\$385.00 each
18+ ft / 5.4+ m height	44 in. Wire Basket - 1,600 lb/725 kg	\$420.00 each

LARCH Siberian (*Larix sibirica*) – Zone 2 Height 60 ft/18 m Spread 25 ft/8 m Needle Length 15-40 mm *The Platypus of conifers...the only one which loses its foliage annually, leaving the ground covered with soft yellow/gold needles. A remarkable transformation occurs every spring when buds break open with tufts of 15 - 60 soft green needles which months later turn golden yellow in fall. Planted as a seedling, it will push through native grass and surprise you how fast it grew in but few years. It's a beautiful specimen tree which should be utilized more often, especially in groupings. Larch has end uses as a saw log, it's wood products are used in various applications because of its durability on floors, doors and windows for which it is resistant to rot.*



12 & 13 ft / 3.6 & 3.9 m height	44 in. Wire Basket - 1,600 lb/725 kg	\$315.00 each
14 & 15 ft / 4.2 & 4.5 m height	44 in. Wire Basket - 1,600 lb/725 kg	\$350.00 each
16 & 17 ft / 4.8 & 5.1 m height	44 in. Wire Basket - 1,600 lb/725 kg	\$385.00 each
18 & 19 ft / 5.4 & 5.7 m height	44 in. Wire Basket - 1,600 lb/725 kg	\$420.00 each
20+ ft / 6.0+ m height	44 in. Wire Basket - 1,600 lb/725 kg	\$460.00 each

NURSERY DISCOUNTS <i>apply to accessories, shipping or handling.</i>	<i>Does not</i>	\$6,000.00 - \$9,999.99	\$10,000.00 +
		10%	15%
NR WHOLESALE CUSTOMERS Contractors - Developers - Government * Discounts does not apply to when paid by credit card.		15%	15%

SPRUCE Meyers (*Picea meyeri*) – Zone 3b Height 98 ft/30m Spread 16 ft/5m Needle Length 13-25 mm A dense pyramidal tree with stiff branches producing upright purple cones and green to milky blue sharp needles. Adapts to a wide range of soils from acidic to neutral. Native to northern China. An excellent replacement of Colorado Spruce in Zone 3b or warmer. Good for the cities and southern Prairie Provinces, however may winter-burn in northern regions if used as a front line shelterbelt.



8 & 9 ft / 2.4 & 2.7 m height	32 in. Wire Basket - 550 lb/250 kg	\$250.00 each
10 & 11 ft / 3 & 3.3 m height	36 in. Wire Basket - 1,100 lb/500 kg	\$280.00 each
12 & 13 ft / 3.6 & 3.9 m height	44 in. Wire Basket - 1,600 lb/725 kg	\$315.00 each
14 & 15 ft / 4.2 & 4.5 m height	44 in. Wire Basket - 1,600 lb/725 kg	\$350.00 each

SPRUCE Colorado (*Picea pungens 'Glauca'*) – Zone 3 Height 65 ft/20m Spread 23 ft/7m Needle Length 15-40 mm A broad & dense pyramidal tree with stiff branches & hard green to bluish/silver needles. It doesn't like shade and since it's **not native to Canada, will sometimes winter burn** (caused by severe temperature swings, reflection of the sun off the snow & drying winter winds while the root system is frozen preventing sap-flow. May cause needles to turn red and falling off the bottom branches. Colorado recovers when new spring growth occurs. Not recommended as a front line tree facing all elements on it's own, however will be ok in protected yards or when part of a multi row windbreak receiving protection by other trees/shrubs.



5 ft / 1.5 m height - Green	32 in. Wire Basket - 550 lb/250 kg	\$190.00 each
6 & 7 ft / 1.8 & 2.1 m height - Green	32 in. Wire Basket - 550 lb/250 kg	\$220.00 each
8 & 9 ft / 2.4 & 2.7 m height - Green	32 in. Wire Basket - 550 lb/250 kg	\$250.00 each
10 & 11 ft / 3 & 3.3 m height - Green	36 in. Wire Basket - 1,100 lb/500 kg	\$280.00 each
12 & 13 ft / 3.6 & 3.9 m height - Green	44 in. Wire Basket - 1,600 lb/725 kg	\$315.00 each
14 & 15 ft / 4.2 & 4.5 m height - Green	44 in. Wire Basket - 1,600 lb/725 kg	\$350.00 each
16 & 17 ft / 4.8 & 5.1 m height - Green	44 in. Wire Basket - 1,600 lb/725 kg	\$385.00 each
5 ft / 1.5 m height - Blue	32 in. Wire Basket - 550 lb/250 kg	\$250.00 each
6 & 7 ft / 1.8 & 2.1 m height - Blue	32 in. Wire Basket - 550 lb/250 kg	\$280.00 each
8 & 9 ft / 2.4 & 2.7 m height - Blue	32 in. Wire Basket - 550 lb/250 kg	\$310.00 each
10 & 11 ft / 3 & 3.3 m height - Blue	36 in. Wire Basket - 1,100 lb/500 kg	\$340.00 each
12 & 13 ft / 3.6 & 3.9 m height - Blue	44 in. Wire Basket - 1,600 lb/725 kg	\$375.00 each
14 & 15 ft / 4.2 & 4.5 m height - Blue	44 in. Wire Basket - 1,600 lb/725 kg	\$410.00 each
16 & 17 ft / 4.8 & 5.1 m height - Blue	44 in. Wire Basket - 1,600 lb/725 kg	\$445.00 each

STATE OF INDUSTRY - CHRISTMAS TREES

- ... **BALSAM FIR - NATURAL GRADE** (expanding selection) is back to the basics for real trees. It's affordable and so much better than plastic.
- ... **FRASER FIR** supply is being outstripped compared to availability and prices continues upwards significantly this year and with the US vs Canadian dollar seeing a 30+% devaluation three years ago, American buyer pressure is additionally responsible for the escalating price increase.
- ... **COLORADO & MEYERS SPRUCE** provide a variation for a tree lot.
- ... **KEEP-ABILITY** of Christmas trees comes down to needle retention. Some species are better than others at withstanding -25 to -40 degree temperatures on the regions retail lots. Acceptable trees must experience repeated freezing weather prior to harvest. Growing your product in Prince Albert with a hardiness rating of Zone 1B-2A essentially means that if it grew here, the product acts as it should. Our city, with a frost bitten winter climate, is the third coldest in the country. Our few suppliers are all in very cold places. What continues to be **BAD FOR BUSINESS** are trees coming from warmer coastal regions which may not experience these repeated freezing temperatures. The regrettable risk of premature green needle drop (current years growth) in the retailer's lot or worse; the consumers home kills the market for all... When this unacceptable situation occurs, customers seek out another retailers or worse, purchase an artificial tree. Compounding the problem; some customers stop displaying a tree period and there may go one significant aspect of the holidays!
- ... **SHIPPING** Christmas trees during the last two weeks of November coincides with unpredictable weather as snow & ice storms often shut down highways disrupting delivery schedules. Due to the number of companies hauling our products, logistics specialists have their hands full in keeping your delivery dates on track. Be aware: delays sometimes happen.
- ... **ADDITIONAL DROP FEE SURCHARGE** should be expected by accounts in small centres. It is evermore difficult to entice truck companies to haul these loads! All small centre accounts may experience a one dollar surcharge on each tree delivered to continue shipping outside the main traffic lanes.
- ... **FUEL PRICE PHENOMENON** of is always present due to disruptions caused by natural disasters affecting supply & production such as hurricanes. Additionally we have global politics and embargos, currency fluctuations and certainly the annual long weekends and the Christmas Rush causes prices to rise. Just this past September 2017 the pump price surged twenty cents only to come back down again. One can't predict this and prompts me to surmise that the supply chain is fragile causing price fluctuations by nervous reactions coupled with gougers. If surcharges are levied on us, these will be passed on.



CHRISTMAS TREES GRADES

GRADE PARTICULARS

- ... **Premium:** Dense and uniform on no less than three sides, with minor imperfections.
- ... **No. 1 & Better:** Medium to full density, uniform on no less than three sides with minor imperfections, stem may be partially visible.
- ... **No. 2 or Econo Grade:** Light to heavy density, colour may be lighter, nice on two and a half plus sides with minor gaps & imperfections on the nicest sides, stem is sometimes visible (corner tree).
- ... **Natural Grade:** Light density with space between branches with visible stem, a natural well formed look, sometimes lightly sheared.

SIZE OF TREES

- ... Measures the entire length of the tree, from the butt to the tip of the leader (top most branch).

CONSIDERATIONS

- ... This is a natural product which has variations in shape, taper, density, colour, needle length, etc. The crews who work in this industry are subjected to all measures of weather ranging from extreme heat, cold, drizzle, rain, sleet, snow, wind and calm. These conditions add to some of the variance of the products offered, which is offered in good faith!



ORDER DEADLINES:

CHRISTMAS TREES - *before September 30th annually*

WREATHS - *before October 8th annually*

Balsam Fir

Multiple choices & price points

Balsam Fir	<i># 1 & Better</i>	5/6 feet	call
Balsam Fir	<i># 1 & Better</i>	6/7 feet	call
Balsam Fir	<i># 1 & Better</i>	7/8 feet	call
Balsam Fir	<i># 1 & Better</i>	8/9 feet	call
Balsam Fir	<i># 1 & Better</i>	9/10 feet	call
Balsam Fir	<i># 1 & Better</i>	10/12 feet	call
Balsam Fir	<i># 1 & Better</i>	12 to 14 feet	call
Balsam Fir	<i># 1 & Better</i>	15 to 19 feet	call
Balsam Fir	<i># 1 & Better</i>	20 to 25 feet	call
Balsam Fir	<i>Econo</i>	5/6 feet	call
Balsam Fir	<i>Econo best value</i>	6/8 feet	call
Balsam Fir	<i>Econo</i>	8/10+ feet	call
Balsam Fir	<i>Natural best value</i>	5/8 feet	call
Balsam Fir	<i>Natural</i>	8/12 feet	call



Colorado Spruce - Natural

Colorado Spruce *Natural* 5/9 feet call

Fraser Fir - Premium

Fraser Fir *Premium* 5/6 feet call

Fraser Fir *Premium* 6/7 feet call

Fraser Fir *Premium* 7/8 feet call

Fraser Fir *Premium* 8/9 feet call

Fraser Fir *Premium* 9/10 feet call

Fraser Fir *Premium* 10/12 feet call

Meyers Spruce - Natural

Meyers Spruce *Natural* 5/9 feet call

CHRISTMAS WHOLESALE - Discounts will apply only if your order is received on or before September 30th and your account is paid in full by the due dates in form of cash or cheque. We do not provide discounts if paid by credit card. Discounts apply only to Christmas trees, not on accessories or freight.

\$5,000.00 - \$9,999.00	\$10,000.00 - \$14,999.00	\$15,000.00 +
2% discount	3% discount	4% discount



FUNDRAISER IDEAS



COMMUNITY BENEFITS:

- ... Fundraising experiences can be a positive influence for young people. It lets them practice good communication skills, interface with the adult world and to work cooperatively while doing their best to achieve personal or group goals that truly benefit our communities.
- ... Many non-profit organizations seek funds for activities with schools, sports, religious projects and charities.

WHAT:

- ... Wreath made with Balsam Fir foliage available in quality and quantity.
- ... Wreaths gracing doorways are beautiful, fragrant & memorable, instilling a true spirit of the festive season
- ... Wreaths arrive packaged and tied in bundles

HOW:

- ... Wreaths are a proven successful fundraiser
- ... Decide upon a project and promote the community benefit providing a clear reason for your fundraiser.
- ... Sell through two proven methods with payment always collected in advance.
 - 1) Through a flyer/parental news letter with signup sheet.
 - 2) Sell door to door and complete a commitment sheet
- ... Host a central pickup point or offer home delivery. As temperatures cool off, wreaths become fragile, handle with care
- ... Store wreaths in the cold and away from the sun & wind
- ... Wreaths are only intended to be displayed outdoors in the shade to maximize the lustre and life of this natural product

ORDER DEADLINES: (October 15th annually)

- ... If you're planning to hold a fundraiser, we ask that you notify us in advance so we may anticipate requirements.

WREATHS

È FUNDRAISER SPECIAL
... DOUBLE SIDED BALSAM FIR

NOTE: This item is made upon demand and weather/snow may have a significant impact on availability of foliage to produce!

**ABSOLUTE DEADLINE
October 11**



<i>Diameter of Ring Size & Outside of Foliage</i>	<i>For information purposes only</i>	Number/Unit	Bundle Price
14 inch / 24 inch	<i>(\$0.00 each)</i>	6/bundle	call
14 inch / 24 inch	<i>(\$0.00 each)</i>	10+ bundles	call
20 inch / 33 inch	<i>(\$0.00 each)</i>	4/ bundle	call



CARE INSTRUCTIONS FOR CHRISTMAS TREES NINE EASY STEPS

1 – **THAW OUT THE TREE** Let it warm up for three hours

2 – **FRESH CUT & PLACE IN STAND** Make a fresh 1/2 inch (1 cm) cut or more on the tree stump before placing in water. This allows a fresh exposure of the cambium layer (green film under the bark) responsible for water up-take and ultimately re-hydration. Prevent heat sources from blowing on your tree. Turn lights off while away from your home or when retiring for the night. Remove the wrapping, enjoy the opening presentation and scent. Decorate to your hearts content.

3 – **KEEP TREE WATERED** Best to use a stand capable of holding at least one day's worth of water. A premium 6-8 ft/2 m tree can draw 4 quarts/4 litres of water per day for the first 10 days until it begins to taper off.

4 – **HOT TAP WATER** Only on the first fill of the stand, use hot tap water to stimulate the sap flow to re-hydrate, replenishing the moisture to the extremities. If your tree ever runs out of water during the display season, suction ceases and the tree loses its ability to resume water uptake (similar to siphoning water out of an aquarium, if the line ever sees air, water uptake stops) and the tree begins to dry out prematurely. Using additives is unnecessary!!!



5 – **TRANSPORTING** Use a thin tarp, tired bed sheet or moving bag to shuttle your tree around. Dispose of the used tree bag separately.

7 – **CLEANING** Clean tree sap from hands and tree stand with ammonia or hand-cleaner like “Fast Orange” and “GOJO”.

8 – **RECYCLE** Contact your local Parks & Recreation department to discover where tree may be chipped for reuse as mulch.

9 – **KEEP THE TAG** Mark the year and stash with your box of decorations from our parents and kids alike, instill memories and enjoy life :)

On behalf of the Gaudets and our dedicated Staff, we wish you a safe and Merry Christmas.





***TREES** provide beautification, shelter, wildlife habitat & provide natural beauty with privacy barriers and increase property values.
SEASONAL ENERGY SAVINGS by increasing property values and reduce energy costs.
DECIDUOUS trees shading a home on the south & west sides may reduce attic temperatures by 40 degrees during the summer months.
CONIFERS provide shelter for your home from the prevailing winds when planted in the northwest corner of your property.*



**SURVIVABILITY DEPENDS UPON YOUR EFFORT! DO NOT LET STOCK OR SOIL DRY OUT!
GUARANTEE IS DEPENDENT UPON YOUR CARE!**

FEDERAL CARBON TAXES

will never decrease or go away in our lifetimes. The reality that this term is becoming increasingly relevant is to simply observe what the science community has to say about how the planet and it's atmosphere has changed since the industrial revolution with the significant increase in burning of fossil fuels. Other than the polar regions and Gov't reserves/parks, humans own the rest of it and until recently have not been held to task for the alterations we have made in the supposed belief of progress. We humans will overcome many of the necessary challenges facing us however adopting changes on our own ahead of mandated laws will help mitigate the ongoing degradation.

Our endeavors into the green industry have proven to us that by planting trees, encouraging the riparian areas (embankments of waterways and allowing pothole sloughs) to expand and encroach our once straight planted rows bring wildlife. So much so that what once was open fields where we could see beyond the far side has evolved where now our workplace has become a forest because it was planned to leave a percentage of the planting to mature indefinitely. To now be on this land after beginning this transformation less than four decades ago is being a visitor to a wild place.

It seems to have attracted everything, one by one the visitors and residents alike arrived; sometimes passing through then searching for the exit door to a wildlife corridor and beyond.

My right hand Anne who manages the phones, customers, crews, tags much of the harvest inventory periodically calls to inform me she is looking at another bear, or has left one of the plantation blocks because an animal walking through with visible shoulders more than six



feet/two meter high is also cruising the bush near by. Sometimes we're lucky to have gotten a photo shot in. Other days, when trimming foliage and looking up we see so many wings moving about. No wonder the critters on the ground have a perspective of where else an abundance of wildlife may exist. They simply follow movement in the air, trails and scent paths.

I can also say much of the pecking order out there because the only remnant seen are of larger game animal bones, the rest is all consumed by wildlife. In rendering their checks and balances.

INITIATE A CARBON SINK:

Trees sequester carbon from the atmosphere. The more trees planted the greater benefit to the planet offsetting our carbon footprint. Planting one or many trees requires a contribution towards the dedicated land set aside, effort, aftercare, and perhaps some financial resources. It's a great endeavor to embark upon. You decide how much to contribute while creating truly enriching and lasting memories.

See our next billboard revision to unselfishly promote a better world for all life forms!



treesrus.ca

REWILD

BRING NATURE BACK



TERMS AND CONDITIONS OF SALES

CONFIRMATION & ORDER PROCEDURES - All orders shall be subject to approval at company's main office. An email, fax or text confirmation and or invoice will be sent out shortly after receiving your order. Payment Terms will be indicated on all invoices. Payment procedures must follow in accordance to time-lines specified. Interest of 1.5% per month charge on past due accounts.

ORDER CHANGE POLICY - The first change is free. An administration fee of \$25.00 may be charged on each additional order change requested.

CANCELLATION POLICY - This company strives to ensure that you will receive 100% of your order. Cancellations cause many lost hours of preparation of your order in addition to more administrative hours to process a cancellation along with additional time required to making required adjustments to inventory, therefore, your 25% deposit will be forfeited.

CREDIT APPLICATION - Available in the centerfold or downloaded on our website.

FEDERAL AND PROVINCIAL SALES TAX - The company is required to collect both federal and provincial sales tax, (PST pertains to Saskatchewan customers only) unless the customer provides either a tax exempt number.

NURSERY DISCOUNTS <i>Does not apply to accessories, shipping or handling.</i>	\$5,000.00 - \$9,999.99	\$10,000.00 +
NR RETAIL CUSTOMERS	10%	15%
NR WHOLESALE CUSTOMERS Contractors - Developers - Government * Discounts does not apply to wholesale sales paid by credit card.	15%	15%

CHRISTMAS WHOLESALE - Discounts will apply only if your order is received on or before September 30th and your account is paid in full by the due dates in form of cash or cheque. We do not provide discounts if paid by credit card. Discounts apply only to Christmas trees, not on accessories or freight.

\$5,000.00 - \$9,999.00	\$10,000.00 - \$14,999.00	\$15,000.00 +
2% discount	3% discount	4% discount

DEFAULT - If you are in default of this Agreement, we may, on notice to you, demand immediate payment of all Indebtedness, and/or cease delivery of any or all products. Should the purchaser fail to pay by the due date(s), he/she shall be deemed in default of this agreement, and the company shall, at its option, after five days following written notice of default, be entitled to all expenses, costs, plus legal fees that are incurred in pursuing enforcement. In the event any action is brought in relation to this agreement, the action will be governed by the laws of the Province of Saskatchewan, Canada.

SHIPMENT TERMS - PROCEDURES - BARRIERS - The company shall use its best efforts to meet requested shipping dates, but such dates shall be deemed estimates only. The company shall bear no responsibility for delays in shipment or delivery resulting from causes beyond the control of the company. The customer shall have the right to select a specific agent for shipment of goods purchased provided that notice of the identity of such shipper shall be given to the company prior to the company's confirmation of the customer's order. All risk of loss shall pass to the purchaser upon shipment of products. Demurrage charges shall be the sole responsibility of the purchaser. We utilize several types of load dividers to separate orders when the truck has multiple drops. It is your responsibility to insure that the barrier between orders is not breached and you or your group only unload items ordered.

PRODUCTS POINT OF ORIGIN - We endeavour to supply you with as much natural product from our farm as possible. You should be aware that some of these products come from other farms and regions other than our own.

CLAIMS FOR QUALITY, DAMAGE OR SHORTAGE - Notice of any claim of product shortage shall be given by noting such claims on the delivery receipt at the time of delivery. The number count is considered final after the shipping list is signed. Claims for quality or damage which is discovered on delivery or in the exercise of reasonable care could have been discovered within seventy-two (72) hours of the time of delivery. In the event of a claim, the purchaser must submit this documentation in writing via fax (306) 922-8733 or Email within 72 hours of receiving your order. If product is damaged, send pictures and hold product's until verification takes place by the Company. In the absence of notice provided in the manner set forth in this paragraph, purchasers will be deemed to have waived any claims.

NURSERY STOCK & ACCESSORY ACCOUNTS

- ... **NEW ACCOUNTS** without established credit must be paid in full prior to shipping. Established accounts with proven credit worthiness - Net 30 days.
- ... **PRICE** - All sales FOB, unless quoted otherwise. Prices set forth on your order represent those in effect on the date of your order, and are in Canadian funds, but shall be subject to modification by company.
- ... **GUARANTEE** - YOUR GUARANTEE IS DEPENDENT UPON YOUR CARE! All nursery stock is true to name. No other guarantee is expressed or implied. We don't guarantee in any manner, expressed or implied the productivity/results of our nursery stock, as we have no control over it's care after it leaves our nursery. We can't be held responsible for plant material that do not grow as it is subject to conditions beyond our control. We accept all orders subject to crop conditions on the condition that orders shall be void should injury befall the stock from hail, flood, fire, wind, error in count and other causes beyond our control.
- ... **ORDER CONFIRMATIONS** - An order confirmation will be sent to you advising that your order was received. This will be followed by an invoice once our grading has been complete. You will be advised that consignee thoroughly review confirmations as it is possible that substitutions have been made on inventory.
- ... **ORDER PROCEDURES ON SHORT NOTICE** - Advise us of your intentions as to when you wish to arrange a pickup/delivery/shipment when placing an order. We may require ten days notice by customer so as to arrange pickup.
- ... **GRADING STANDARDS** - All trees are measured from tip to tip. Nursery stock dug into wire baskets has the nicest side identified by a coloured flagging take on the wire basket. Cultured Christmas Tree stock is graded by experienced personal, the process of follow-up shearing, harvesting, dragging, baling, handling & shipping may result in few errors however rare.
- ... **OWNERSHIP** - Once plant material is picked up/delivered/shipped, the customer now retains ownership and is 100% responsible for the welfare of their purchase.
- ... **WHOLESALE PICKUP** - **Monday to Friday** April to November 9:00 to 5:00
- ... **PICKUP ORDERS** - Seven days notice is required for pick-up and shipping of Nursery Stock. For pickup orders, customers must supply their own tarps to adequately cover nursery stock to prevent wind burn during transport.
- ... **HOLDING POLICY** - This family run operation strives to ensure that you will receive 100% of your order. Orders assembled and not picked up/shipped out within ten days will be levied a maintenance fee of 5% and carrying fees until the customer can take possession.
- ... **PACKAGING** - If your plant materials require boxes, pallets, or additional packaging material, the expense will be passed on to you at cost and is non-returnable or non-

refundable.

CHRISTMAS TREE & ACCESSORY ACCOUNTS

Orders must be received by September 30th. Upon receipt of your order you will receive an invoice. A 75% Deposit is Due on October 15th, balance payable November 30th. Unless special arrangements are agreed upon, orders will not be shipped if deposits have not been received.

Non-profit Organizations Payable in full by December 15th.

Final Invoices will be issued according to confirmation of the SHIP LIST, once your order has been loaded.

- ... **PRICES** - Prices set forth on your order represent those in effect on the date of your order but shall be subject to change. If the final price should exceed the order price by more than 5% the company shall notify the customer at least 30 days prior to the date of shipment. All sales are delivered, unless quoted otherwise.
- ... **GRADE AND SIZE VARIABILITY - PRODUCT AVAILABILITY** - Because this industry works in conjunction with nature, and that most tasks require human decisions and efforts, you must accept the realities associated with nature and human endeavours in this regard. Each region has variations in environmental conditions: volume of snow; spring, summer & fall precipitation levels; late frosts; heat waves; pestilence issues, etc. Most cultural aspects including: caring, shaping, grading, tagging, harvesting and loading, as well as human error; will have ramifications for some products being shipped outside the grade-size. Possible quarantined areas or natural disasters may affect availability resulting in fewer numbers deliverable. You must accept the possibility of a 10% leeway on size and grade variations; we will do our utmost to provide you with the products you order.
- ... **TREE SUBSTITUTION - PRICE VARIATION** - The company will not provide a substitution should there be a shortfall in the number of trees ordered. We will notify you of a shortage of availability and notify you of any other species which are in abundance. This will allow you to make the decision to add to your order or not.
- ... **FREIGHT OPTION** - The customer picking up at our shipping-receiving yard will receive a freight discount in the amount indicated on the Shipping and Payment Details form. Pickups take place in the last 10 days of November and must be arranged between the company and the customer beforehand.

FREIGHT CONSIDERATIONS

- ... **WAIT & UNLOADING TIMES** - So that drivers can arrive at your exact destination on time, we must receive clear directions as to where the delivery will take place. You must also provide as many contact names and phone numbers. Drivers monitor unloading times, with \$1.50/minute in 15 minute increments for a full trailer drop exceeding two hours, smaller orders will be prorated downward. Please do your best in unloading as quickly as possible. Drivers are not responsible to assist in unloading. The trailers must be swept out after your order is delivered, two push brooms can accomplish this in under five minutes (be prepared). This gracefulness will buy us some leeway. If charges occur, you will receive this additional invoice after we have received it and an invoice will be mailed to you. You must ensure adequate help is available to unload your orders in a very timely fashion.
- ... **CHRISTMAS TREE DROP FEES** - Commercial carriers levy additional charges to the standard mileage rates if several stops are made along the way. Please be aware that we are advocates of preserving the integrity of smaller centers and will do what we can to deliver to your location. If you are on a trucking route outside of standard shipping lanes, we may, either request you pick up at the nearest drop to you (a gratuity for this service would be appreciated by the people handling your drop & reload) or will pass on the extra drop fee and possible extra mileage rate if you are off the beaten track. All accounts will now be levied a minimum \$85.00 drop fee. This fee may seem steep but is now in place for all accounts so that transportation firms will continue to want to haul this nature of

work. If we are charged more than you will be notified as soon as we know that the fee has or will go up to a maximum of \$100.00 for the drop. The mile rate would be a standard fee per km or mile.

- ... Freight can be arranged by the purchaser or the company. All efforts will be made to find the most reasonable shipping rates.
- ... Commercial carriers are not responsible for unloading your product. The customer or their representative must be on site when delivery is made. The buyer agrees to file claims against carrier for any plant materials damaged in transit. Count is considered final when our SHIPPING LIST is signed and dated. All shipments are considered final unless notified in writing within 72 hours (*we may request colour photographs and samples if issues arise*).
- ... Commercial carriers levy additional charges to the standard mileage rates if several stops are made along the way, please be aware that we are advocates of preserving the integrity of smaller centres and will do what we can to deliver to your location.
- ... If additional charges occur an invoice will be mailed to you.
- ... Once plant material is picked up/delivered/shipped, the customer retains ownership and is 100% responsible for the purchase.
- ... The buyer agrees to file claims against the carrier for any damages in transit.
- ... Freight may be charged on a per foot basis and varies depending on shipping routes.



CHRISTMAS TREES

**We've grown your
Christmas trees for**

35 years

**Located in the
Prince Albert area
of central Saskatchewan**

www.treesrus.ca

Gaudet Trees Ltd.
RR 3 Site 3 Comp 5
Prince Albert, SK S6V 5R1
Tel 306.922.1052



R
P
G
/P
R
G

CANADA	POSTES
POST	CANADA
Postage paid	Port payé
Addressed Admail	Médiaposte avec adresse
7178249	

RETURN POSTAGE GUARANTEED
PORT DE RETOUR GARANTI



Legislature Trees

treesrus.ca